

**ITEM 5.           ITEM FOR COMMITTEE INFORMATION – SYDNEY CITY CENTRE  
ACCESS STRATEGY WORKING GROUP – AGENDA AND  
MINUTES FOR MEETING ON 17 OCTOBER 2014**

**TRIM RECORD NO:   2014/483437**

**RECOMMENDATION**

It is recommended that the Committee note the Agenda and Minutes of the Sydney City Centre Access Strategy Working Group meeting held on Friday 17 October 2014.

**DECISION**

**BACKGROUND**

In September 2014, the Local Pedestrian Cycling and Traffic Calming Committee (LPCTCC) endorsed that:

- (A) a Working Group be established to review, amend and endorse traffic and parking changes associated with the implementation of the Sydney City Centre Access Strategy;
- (B) the Working Group is to be represented by all voting members of the Local Pedestrian, Cycling and Traffic Calming Committee including the NSW Police, Roads and Maritime Services, State Member for Sydney and the City of Sydney;
- (C) the Working Group is to also include non-voting representatives from Transport for NSW, Transport Management Centre and the Sydney Harbour Foreshore Authority in an advisory role; and
- (D) That all recommendations made by the Working Group must be reported back to the Local Pedestrian, Cycling and Traffic Calming Committee as Items for Committee Information.

**COMMENTS**

The Sydney City Centre Access Strategy Working Group met on 17 October 2014 to review the early works for CBD and South Eastern Light Rail at seven intersections on George Street and at the intersection of Eddy Avenue, Pitt Street and Rawson Place.

**CONSULTATION**

The Applicant will be required to notify affected stakeholders as stipulated in Schedule C.

**FINANCIAL**

All costs associated with the temporary lane closures and full road closures for the delivery of the SCCAS will be borne by the Applicant.

**ATTACHMENTS**

Item for Committee Information – Sydney City Centre Access Strategy Working Group – Agenda and Minutes for Meeting on 17 October 2014

Col Warne, Traffic Project Manager



**17 October 2014**

**At 1.30pm**

**LOCAL PEDESTRIAN CYCLING AND TRAFFIC CALMING  
COMMITTEE WORKING GROUP MEETING**

**AGENDA**

**TABLE OF CONTENTS**

<b>ITEM</b>	<b>PAGE NO</b>
1. PRESENT AND APOLOGIES.....	5
2. CONFIRMATION OF MINUTES FOR MEETING ON FRIDAY 3 OCTOBER 2014.....	7
3. TEMPORARY ROAD CLOSURES – ROADWORKS - GEORGE STREET AT ESSEX STREET GROSVENOR STREET AND BRIDGE STREET - MARGARET STREET AND HUNTER STREET SYDNEY .....	9
4. TEMPORARY ROAD CLOSURES – ROADWORKS - GEORGE STREET AT MARGARET STREET HUNTER STREET AND KING STREET SYDNEY .....	13
5. TEMPORARY ROAD CLOSURES – ROADWORKS - GEORGE STREET AT BATHURST STREET AND LIVERPOOL STREET SYDNEY .....	17
6. TEMPORARY ROAD CLOSURES – ROADWORKS - GEORGE STREET AT GOULBURN STREET SYDNEY .....	21
7. TEMPORARY ROAD CLOSURES – ROADWORKS – EDDY AVENUE PITT STREET AND RAWSON PLACE SYDNEY .....	25
8. TEMPORARY ROAD CLOSURES – CITY OF SYDNEY CBD ON-STREET CONSTRUCTION MORATORIUM.....	29
9. OTHER BUSINESS - COMMUNICATION STRATEGY FOR EARLY WORKS - TMC TACKFORCE WORK AREA FOR ROAD CLOSURE APPROVAL .....	33
10. SCHEDULE C – TEMPORARY ROAD CLOSURE CONDITIONS .....	35

**ITEM 1. PRESENT AND APOLOGIES**

**COMMITTEE MEMBERS**

<input type="checkbox"/>	James Mihos	Sydney City LAC Police
<input type="checkbox"/>	Keith Williamson	Sydney City LAC Police
<input type="checkbox"/>	Garry Hitchcock	Sydney City LAC Police
<input type="checkbox"/>	Paul Carrett	Police State Planning Unit, Major Events & Incidents Group
<input type="checkbox"/>	Stephen Sherwin	RMS
<input type="checkbox"/>	Shane Schneider	RMS
<input type="checkbox"/>	Navin Prasad	RMS
<input type="checkbox"/>	Paul McNeil	RMS
<input type="checkbox"/>	Peter Carruthers	RMS
<input type="checkbox"/>	Steve Brown	RMS
<input type="checkbox"/>	Col Warne (A/Chairperson)	City of Sydney
<input type="checkbox"/>	Mark Hannan	City of Sydney
<input type="checkbox"/>	Barry Keogh	City of Sydney
<input type="checkbox"/>	Matthew Degen	City of Sydney
<input type="checkbox"/>	Jennifer Faddy	City of Sydney
<input type="checkbox"/>	Alex Greenwich	Local Member for Sydney
<input type="checkbox"/>	Roy Bishop	Local Member for Sydney Rep
<input type="checkbox"/>	Terry O'Connor	TfNSW
<input type="checkbox"/>	Mark O'Shea	TfNSW
<input type="checkbox"/>	Chris Paras	TfNSW
<input type="checkbox"/>	Steven Issa	CBD Taskforce/TfNSW
<input type="checkbox"/>	Brian Mander	CBD Taskforce/TfNSW
<input type="checkbox"/>	Giovanny Ramirez	CBD Taskforce/TfNSW
<input type="checkbox"/>	Craig Burrell	Laing O'Rourke Contractor
<input type="checkbox"/>	Raquel Rubalcaba	Laing O'Rourke Contractor
<input type="checkbox"/>	Zack Michalski	Laing O'Rourke Contractor
<input type="checkbox"/>	Stephen Read	Bitzios Consulting
<input type="checkbox"/>	Alan Finlay	Bitzios Consulting
<input type="checkbox"/>	Brett Maynard	GTA Consultants

**ITEM 2. CONFIRMATION OF MINUTES FOR MEETING ON FRIDAY 3 OCTOBER 2014**

**DECISION**

### ITEM 3

#### TEMPORARY ROAD CLOSURES – ROADWORKS - GEORGE STREET AT ESSEX STREET GROSVENOR STREET AND BRIDGE STREET - MARGARET STREET AND HUNTER STREET SYDNEY

TRIM RECORD NO: 2014/446273-02

#### RECOMMENDATION

It is recommended that the Committee endorse the temporary road closures of

- George Street, between Grosvenor Street and Essex Street, Sydney, on each Sunday from 16 November to 30 November 2014 from Sunday 3am to Monday 5am;
- George Street, between Margaret Street and Hunter Street, Sydney, on each Sunday from 16 November to 30 November 2014 from Sunday 3am to Monday 5am; and
- George Street, at Grosvenor Street and Bridge Street, Sydney, on each Sunday from 16 November to 30 November 2014 from Sunday 3am to Monday 5am,

Subject to the following conditions:-

- (A) The Applicant must comply with the temporary road closure conditions as mentioned in Schedule C of this agenda.
- (B) The Applicant must comply with any other conditions imposed by City's Construction Regulation Unit.
- (C) The Applicant must contact the Sydney City Local Area Command to discuss deployment of user pay police for the road closure.
- (D) The Applicant is to obtain a Road Occupancy Licence from the Transport Management Centre prior to commencement of works.
- (E) The Applicant must provide a telephone number of the supervisor responsible for the proposed George Street closures and include contact details in the notification letters to be distributed to affected stakeholders.
- (F) The Applicant must contact Sydney Buses and arrange and pay for the rerouting of bus services around the George Street closures, the temporary relocation of bus stops and any additional staff required.
- (G) The Applicant must ensure all traffic control (barricades, signage, traffic controllers) presented at the Local Pedestrian Cycling and Traffic Calming Committee Working Group Meeting on each from 16 November to 30 November 2014 is implemented.

#### DECISION

## **BACKGROUND**

The Working Group at the 3 October 2014 meeting (Item 2) reviewed the temporary road closures for

- George Street, between Grosvenor Street and Essex Street, Sydney, on each Sunday from 16 November to 30 November 2014 from Sunday 3am to Monday 5am;
- George Street, between Margaret Street and Hunter Street, Sydney, on each Sunday from 16 November to 30 November 2014 from Sunday 3am to Monday 5am; and
- George Street, at Grosvenor Street and Bridge Street, Sydney, on each Sunday from 16 November to 30 November 2014 from Sunday 3am to Monday 5am.

## **COMMENTS**

The Committee endorsed in principle to the recommendation, work dates and traffic management subject to the following:-

- The Applicant to undertake consultation with affect properties/groups such as The Ivy, NSW Taxis Council, The Rocks Markets, Overseas Passenger Terminal, Sydney City LAC Police; and
- The Applicant must prepare detailed traffic control plans for each control point.

The TMC Taskforce met on 15 October 2014 to review the details for traffic management and traffic control. Modifications were made to plans which included bus service access requested by bus operators. Advice will be provided plans at the Working Group meeting.

## **CONSULTATION**

The Applicant will be required to notify affected stakeholders as stipulated in Schedule C.

## **FINANCIAL**

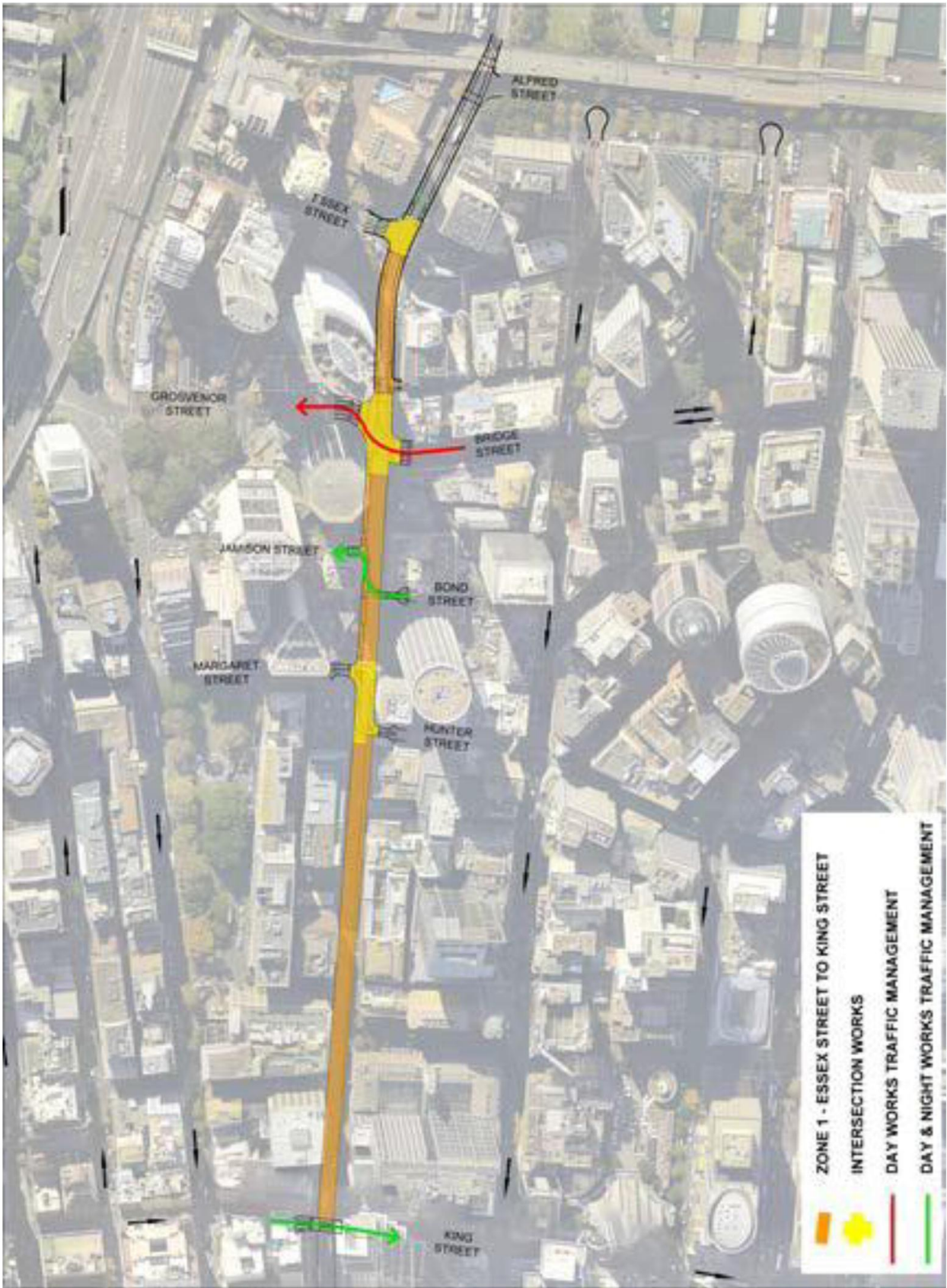
All costs associated with the proposed road closure will be borne by the Applicant.

## **ATTACHMENTS**

Temporary Road Closures – Roadworks - George Street at Essex Street Grosvenor-Bridge Streets and Margaret-Hunter Streets Sydney

Col Warne, Traffic Project Manager





**ITEM 4****TEMPORARY ROAD CLOSURES – ROADWORKS - GEORGE STREET AT MARGARET STREET HUNTER STREET AND KING STREET SYDNEY****TRIM RECORD NO: 2014/446423-02****RECOMMENDATION**

It is recommended that the Committee endorse the temporary road closures of

- George Street at Margaret Street and Hunter Street, Sydney on Sunday 7 December from Sunday 3am to Monday 5am;
- George Street, at King Street, Sydney on Sunday from 7 December 2014 from Sunday 3am to Monday 5am;

Subject to the following conditions:-

- (A) The Applicant must comply with the temporary road closure conditions as mentioned in Schedule C of this agenda.
- (B) The Applicant must comply with any other conditions imposed by City's Construction Regulation Unit.
- (C) The Applicant must contact the Sydney City Local Area Command to discuss deployment of user pay police for the road closure.
- (D) The Applicant is to obtain a Road Occupancy Licence from the Transport Management Centre prior to commencement of works.
- (E) The Applicant must provide a telephone number of the supervisor responsible for the proposed George Street closures and include contact details in the notification letters to be distributed to affected stakeholders.
- (F) The Applicant must contact Sydney Buses and arrange and pay for the rerouting of bus services around the George Street closures, the temporary relocation of bus stops and any additional staff required.
- (H) The Applicant must ensure all traffic control (barricades, signage, traffic controllers) presented at the Local Pedestrian Cycling and Traffic Calming Committee Working Group Meeting for each site is implemented on 7 December 2014.
- (I) The Applicant to consult with affect properties/groups such as The Ivy, Taxis, emergency services;
- (J) The Applicant to prepare detailed traffic control plans for each control point;
- (K) The Applicant to review the proposed road closure in George Street, north of Park Street to move it north of Market Street.

**DECISION**

## **BACKGROUND**

The Working Group at the 3 October 2014 meeting (Item 3) reviewed the temporary road closures for

- George Street at Margaret Street and Hunter Street, Sydney for each Sunday from 7 to 14 December from Sunday 3am to Monday 5am;
- George Street, at King Street, Sydney for each Sunday from 7 to 14 December from Sunday 3am to Monday 5am.

## **COMMENT**

The Committee agreed in principle to the recommendation, work date 7 December 2014 and traffic management subject to the following:-

- The Applicant to undertake consultation with affect properties/groups such as The Ivy, NSW Taxis Council, The Rocks Markets, Overseas Passenger Terminal, Sydney City LAC Police; and
- The Applicant must prepare detailed traffic control plans for each control point.

The work proposed for 14 December 2014 was deferred for further consideration as the date is within the City's on-street construction moratorium for the CBD.

The TMC Taskforce met on 15 October 2014 to review the details for traffic management and traffic control. Modifications were made to plans which included bus service access requested by bus operators. Advice will be provided plans at the Working Group meeting.

## **CONSULTATION**

The Applicant will be required to notify affected stakeholders as stipulated in Schedule C.

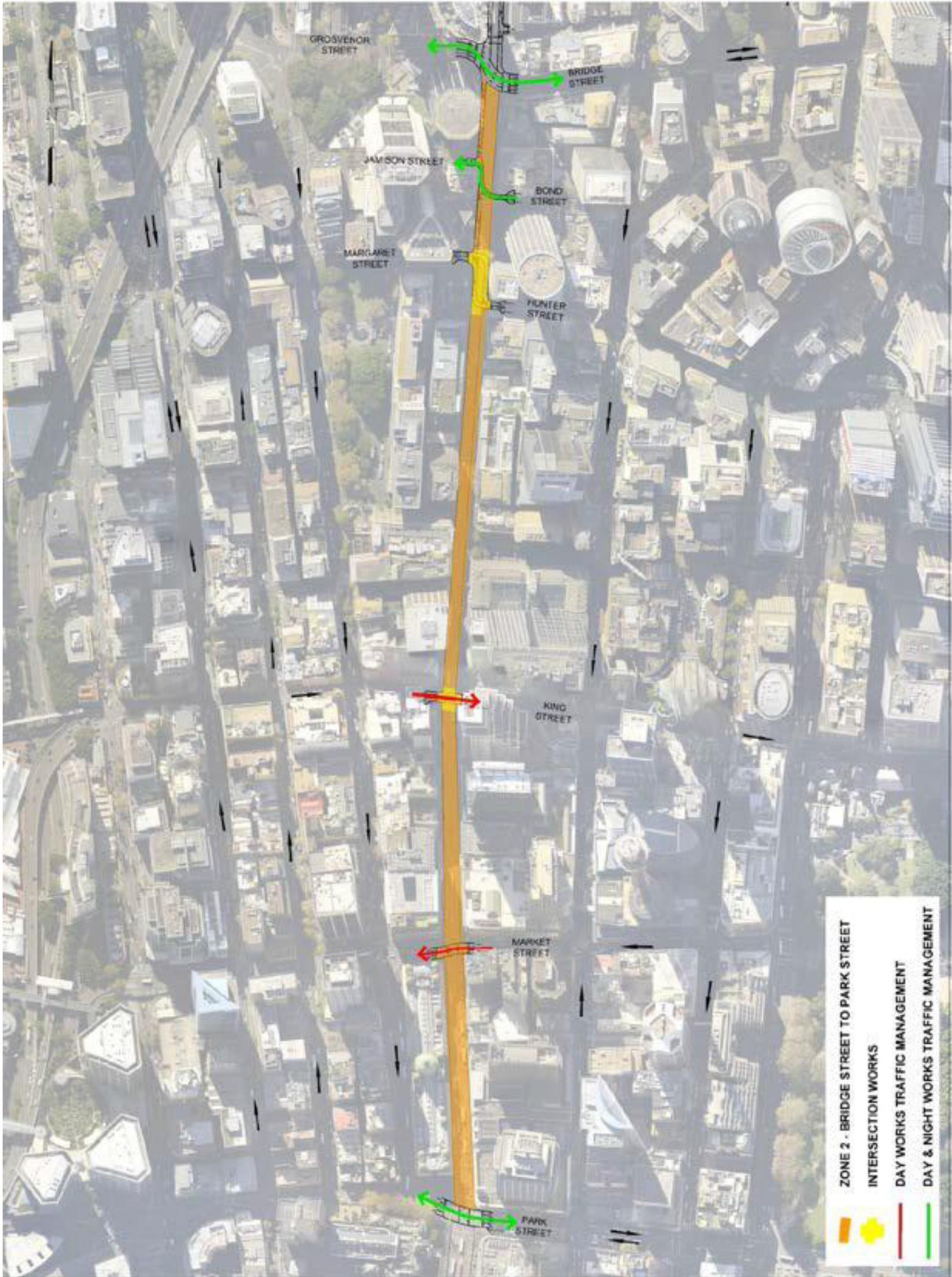
## **FINANCIAL**

All costs associated with the proposed road closure will be borne by the Applicant.

## **ATTACHMENTS**

Temporary Road Closures – Roadworks - George Street at Margaret Street Hunter Street and King Street Sydney

Col Warne, Traffic Project Manager



**ITEM 5****TEMPORARY ROAD CLOSURES – ROADWORKS - GEORGE STREET AT BATHURST STREET AND LIVERPOOL STREET SYDNEY****TRIM RECORD NO: 2014/446579-02****RECOMMENDATION**

It is recommended that the Committee endorse the temporary road closures of

- George Street at Park Street, Sydney, on each Sunday from 26 October to 2 November 2014 from Sunday 3am to Monday 5am;
- Bathurst Street at Kent Street, Sydney, from Sunday 26 October to 2 November 2014 3am to 9am and from Sunday 10pm to Monday 5am;
- George Street, at Goulburn Street, Sydney, on each Sunday from 26 October to 2 November 2014 from Sunday 3am to Monday 5am; and
- Liverpool Street at Castlereagh St, Sydney, on each Sunday from 26 October to 2 November 2014 from Sunday 3am to Monday 5am;

Subject to the following conditions:-

- (A) The Applicant must comply with the temporary road closure conditions as mentioned in Schedule C of this agenda.
- (B) The Applicant must comply with any other conditions imposed by City's Construction Regulation Unit.
- (C) The Applicant must contact the Sydney City Local Area Command to discuss deployment of user pay police for the road closure.
- (D) The Applicant is to obtain a Road Occupancy Licence from the Transport Management Centre prior to commencement of works.
- (E) The Applicant must provide a telephone number of the supervisor responsible for the proposed George Street closures and include contact details in the notification letters to be distributed to affected stakeholders.
- (F) The Applicant must contact Sydney Buses and arrange and pay for the rerouting of bus services around the George Street closures, the temporary relocation of bus stops and any additional staff required.
- (G) The Applicant must ensure all traffic control (barricades, signage, traffic controllers) presented at the Local Pedestrian Cycling and Traffic Calming Committee Working Group Meeting on each from 26 October to 9 November 2014 is implemented.
- (H) The Applicant to consult with affect properties/groups, St Andrew's Church.
- (I) The Applicant must maintain emergency access next to the work site.
- (J) The Applicant to prepare detailed traffic control plans for each control point.
- (K) The RMS to determine authorisation of changes to regulatory signage.

## DECISION

### BACKGROUND

The Working Group at the 3 October 2014 meeting (Item 4) reviewed the temporary road closures for

- George Street at Park Street, Sydney, on each Sunday from 26 October to 2 November 2014 from Sunday 3am to Monday 5am;
- Bathurst Street at Kent Street, Sydney, from Sunday 26 October to 2 November 2014 3am to 9am and from Sunday 10pm to Monday 5am;
- George Street, at Goulburn Street, Sydney, on each Sunday from 26 October to 2 November 2014 from Sunday 3am to Monday 5am; and
- Liverpool Street at Castlereagh St, Sydney, on each Sunday from 26 October to 2 November 2014 from Sunday 3am to Monday 5am.

### COMMENTS

The Committee agreed in principle to the recommendation, work dates 26 October to 2 November 2014 and traffic management subject to the following:-

- The Applicant to consult with affect properties/groups, St Andrew's Church;
- The Applicant must maintain emergency access next to the work site;
- The Applicant to prepare detailed traffic control plans for each control point; and
- The RMS to determine authorisation of changes to regulatory signage.

The TMC Taskforce met on 15 October 2014 to review the details for traffic management and traffic control. Modifications were made to plans which included bus service access requested by bus operators. Advice will be provided plans at the Working Group meeting.

### CONSULTATION

The Applicant will be required to notify affected stakeholders as stipulated in Schedule C.

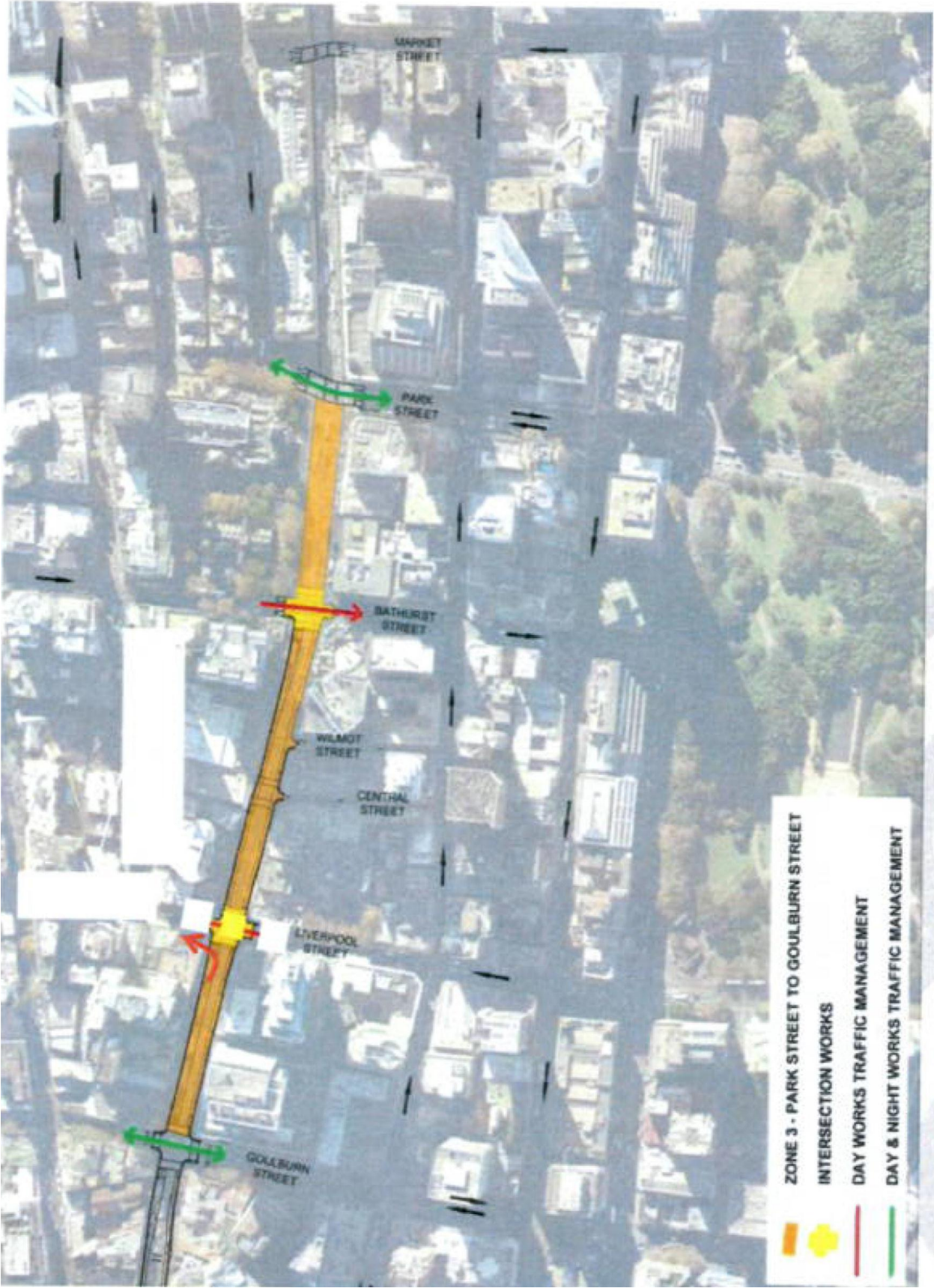
### FINANCIAL

All costs associated with the proposed road closure will be borne by the Applicant.

### ATTACHMENTS

Temporary Road Closures – Roadworks - George Street at Bathurst Street and Liverpool Street Sydney

Col Warne, Traffic Project Manager







## ITEM 6

### TEMPORARY ROAD CLOSURES – ROADWORKS - GEORGE STREET AT GOULBURN STREET SYDNEY

TRIM RECORD NO: 2014/446617-02

#### RECOMMENDATION

It is recommended that the Committee endorse the temporary road closures of

- George Street at Bathurst Street, Sydney, on Sunday from 9 November 2014 from Sunday 3am to Monday 5am;
- George Street at Hay Street, Sydney, on Sunday from 9 November 2014 from Sun 5am to 9am and from Sun 10pm to Monday 5am;
- Goulburn Street between Sussex Street and Pitt Street, Sydney, from 9 November 2014 from Sunday 5am to Sun 9am and from Sun 10pm to Monday 5am;

Subject to the following conditions:-

- (A) The Applicant must comply with the temporary road closure conditions as mentioned in Schedule C of this agenda.
- (B) The Applicant must comply with any other conditions imposed by City's Construction Regulation Unit.
- (C) The Applicant must contact the Sydney City Local Area Command to discuss deployment of user pay police for the road closure.
- (D) The Applicant is to obtain a Road Occupancy Licence from the Transport Management Centre prior to commencement of works.
- (E) The Applicant must provide a telephone number of the supervisor responsible for the proposed George Street closures and include contact details in the notification letters to be distributed to affected stakeholders.
- (F) The Applicant must contact Sydney Buses and arrange and pay for the rerouting of bus services around the George Street closures, the temporary relocation of bus stops and any additional staff required.
- (G) The Applicant must ensure all traffic control (barricades, signage, traffic controllers) presented at the Local Pedestrian Cycling and Traffic Calming Committee Working Group Meeting for each site is implemented on 9 November 2014.
- (H) The Applicant to consult with affect groups such as Taxis and properties affect by the closure;
- (I) The Applicant must maintain emergency access next to the work site;
- (J) The Applicant to prepare detailed traffic control plans for each control point; and
- (K) The RMS to determine authorisation of changes to regulatory signage.

## DECISION

### BACKGROUND

The Working Group at the 3 October 2014 meeting (Item 5) reviewed the temporary road closures for

- George Street at Bathurst Street, Sydney, on Sunday from 9 November 2014 from Sunday 3am to Monday 5am;
- George Street at Hay Street, Sydney, on Sunday from 9 November 2014 from Sun 5am to 9am and from Sun 10pm to Monday 5am;
- Goulburn Street between Sussex Street and Pitt Street, Sydney, from 9 November 2014 from Sunday 5am to Sun 9am and from Sun 10pm to Monday 5am.

### COMMENTS

The Committee agreed in principle to the recommendation, work dates 9 November 2014 and traffic management subject to the following:-

- The Applicant to consult with affect groups such as Taxis and properties affect by the closure;
- The Applicant must maintain emergency access next to the work site;
- The Applicant to prepare detailed traffic control plans for each control point; and
- The RMS to determine authorisation of changes to regulatory signage.

The TMC Taskforce met on 15 October 2014 to review the details for traffic management and traffic control. Modifications were made to plans which included bus service access requested by bus operators. Advice will be provided plans at the Working Group meeting.

### CONSULTATION

The Applicant will be required to notify affected stakeholders as stipulated in Schedule C.

### FINANCIAL

All costs associated with the proposed road closure will be borne by the Applicant.

### ATTACHMENTS

Temporary Road Closures – Roadworks - George Street at Goulburn Street Sydney

Col Warne, Traffic Project Manager





**ITEM 7****TEMPORARY ROAD CLOSURES – ROADWORKS – EDDY AVENUE PITT STREET AND RAWSON PLACE SYDNEY****TRIM RECORD NO: 2014/462218****RECOMMENDATION**

It is recommended that the Committee review TfNSW proposed work options at Eddy Avenue, Pitt Street and Rawson Place, Sydney and provide comments at the meeting.

General conditions for contractor to undertake road works are as follows:-

- (A) The Applicant must comply with the temporary road closure conditions as mentioned in Schedule C of this agenda.
- (B) The Applicant must comply with any other conditions imposed by City's Construction Regulation Unit.
- (C) The Applicant must contact the Sydney City Local Area Command to discuss deployment of user pay police for the road closure.
- (D) The Applicant is to obtain a Road Occupancy Licence from the Transport Management Centre prior to commencement of works.
- (E) The Applicant must provide a telephone number of the supervisor responsible for the proposed George Street closures and include contact details in the notification letters to be distributed to affected stakeholders.
- (F) The Applicant must ensure all traffic control (barricades, signage, traffic controllers) presented at the Local Pedestrian Cycling and Traffic Calming Committee Working Group Meeting on each staged road closure.

**DECISION****BACKGROUND**

Transport for NSW's (TfNSW) '*CBD and South East Light Rail*' project requires a check of underground services along the rail corridor especial through the CBD as part of early works for the light rail.

Lang O'Rourke Contractor (LOC) has been engaged by TfNSW to undertake the service checks on the Pitt Street, Eddy Avenue and Rawson Place intersection.

**COMMENTS**

TfNSW construction work at the Pitt Street, Eddy Avenue and Rawson Place intersection requires work to be undertaken in 2 or 3 stages to minimise the impact on traffic and pedestrians.

The intersection is a critical part of the early works and there are issues with maintaining satisfactory traffic access around the site.

The TMC Taskforce met on 15 October 2014 traffic management and traffic control for the Pitt Street, Eddy Avenue and Rawson Place intersection was raised but as yet, detailed plans have not be prepared. Options are still being considered and will be discussed at the Working Group meeting.

### **CONSULTATION**

The Applicant will be required to notify affected stakeholders as stipulated in Schedule C.

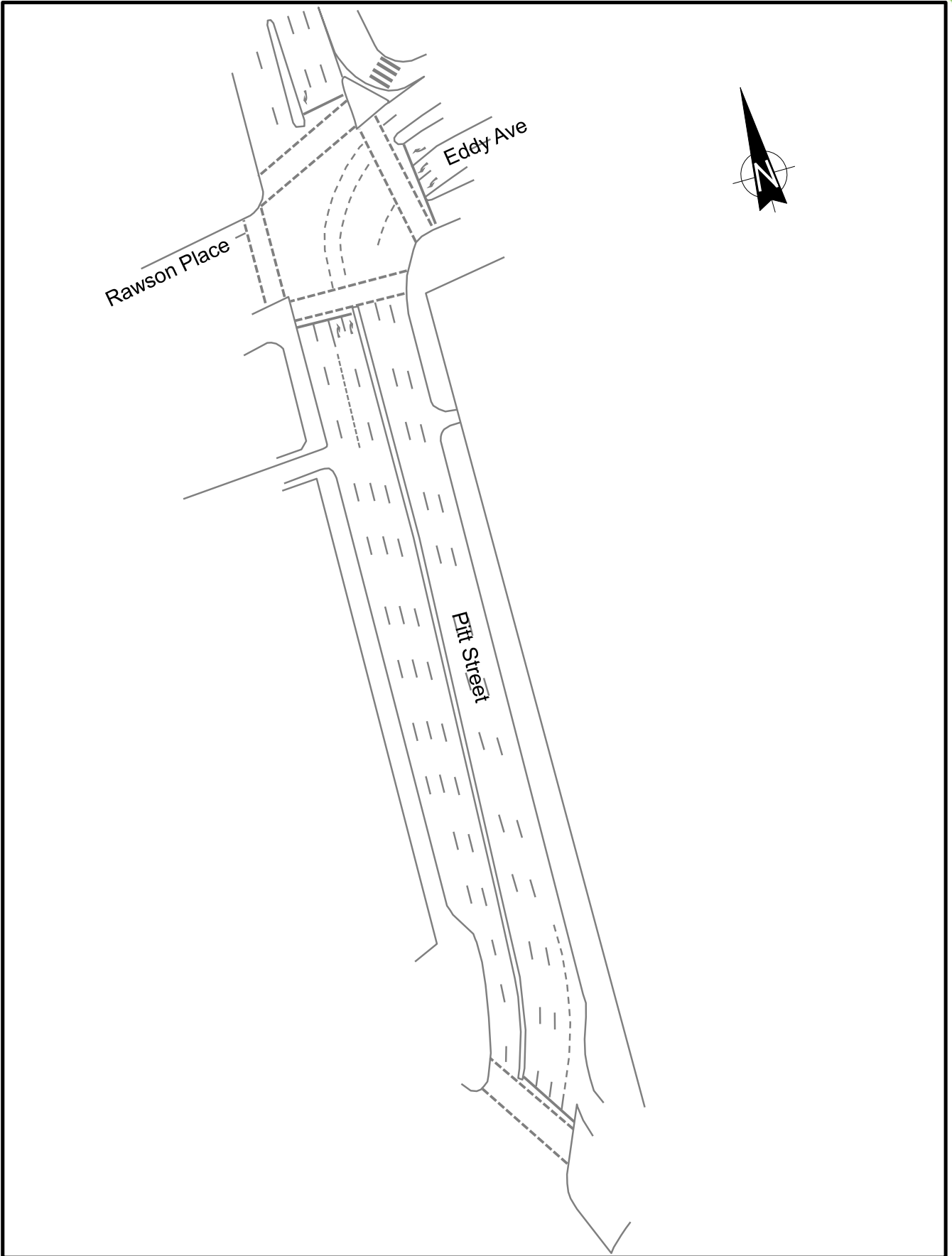
### **FINANCIAL**

All costs associated with the proposed road closure will be borne by the Applicant.

### **ATTACHMENTS**

Temporary Road Closures – Roadworks - Eddy Avenue Pitt Street and Rawson Place Sydney

Col Warne, Traffic Project Manager







## ITEM 8

### TEMPORARY ROAD CLOSURES – CITY OF SYDNEY CBD ON-STREET CONSTRUCTION MORATORIUM

TRIM RECORD NO: 2014/465191

#### RECOMMENDATION

It is recommended that the Committee consider each temporary road closure site within the moratorium area to determine what can or cannot be constructed.

#### DECISION

#### BACKGROUND

The City of Sydney has a moratorium for on-street construction activities in and around the CBD every December.

Light Rail early works to determine the location of services under the roadway has a number of sites required to be worked on during the moratorium.

#### COMMENTS

The on-street construction moratorium generally start on the first working Monday in December and finishes on the first working day in January.

The moratorium started in the early 1990's due to the significant increase in pedestrian activity associated with Christmas shopping, University/school holidays and increase in social activities in the CBD.

The main target was originally to shopping precinct around Marking Place in the north, Elizabeth Street in the east, Liverpool Street in the south and Kent Street in the west.

Over the years, the area expanded to Railway Square and Circular Quay.

The early work sites that TfNSW want to working in December during the moratorium period include the following:-

- George Street at Margaret Street and Hunter Street, Sydney on Sunday 14 December from Sunday 3am to Monday 5am;
- George Street, at King Street, Sydney on Sunday from 14 December 2014 from Sunday 3am to Monday 5am;
- Pitt Street, Eddy Avenue and Rawson Place intersection;
- George Street, Grosvenor Street and Bridge Street from 27 December 2014 to 11 January 2015.

#### CONSULTATION

The Applicant will be required to notify affected stakeholders as stipulated in Schedule C.

**FINANCIAL**

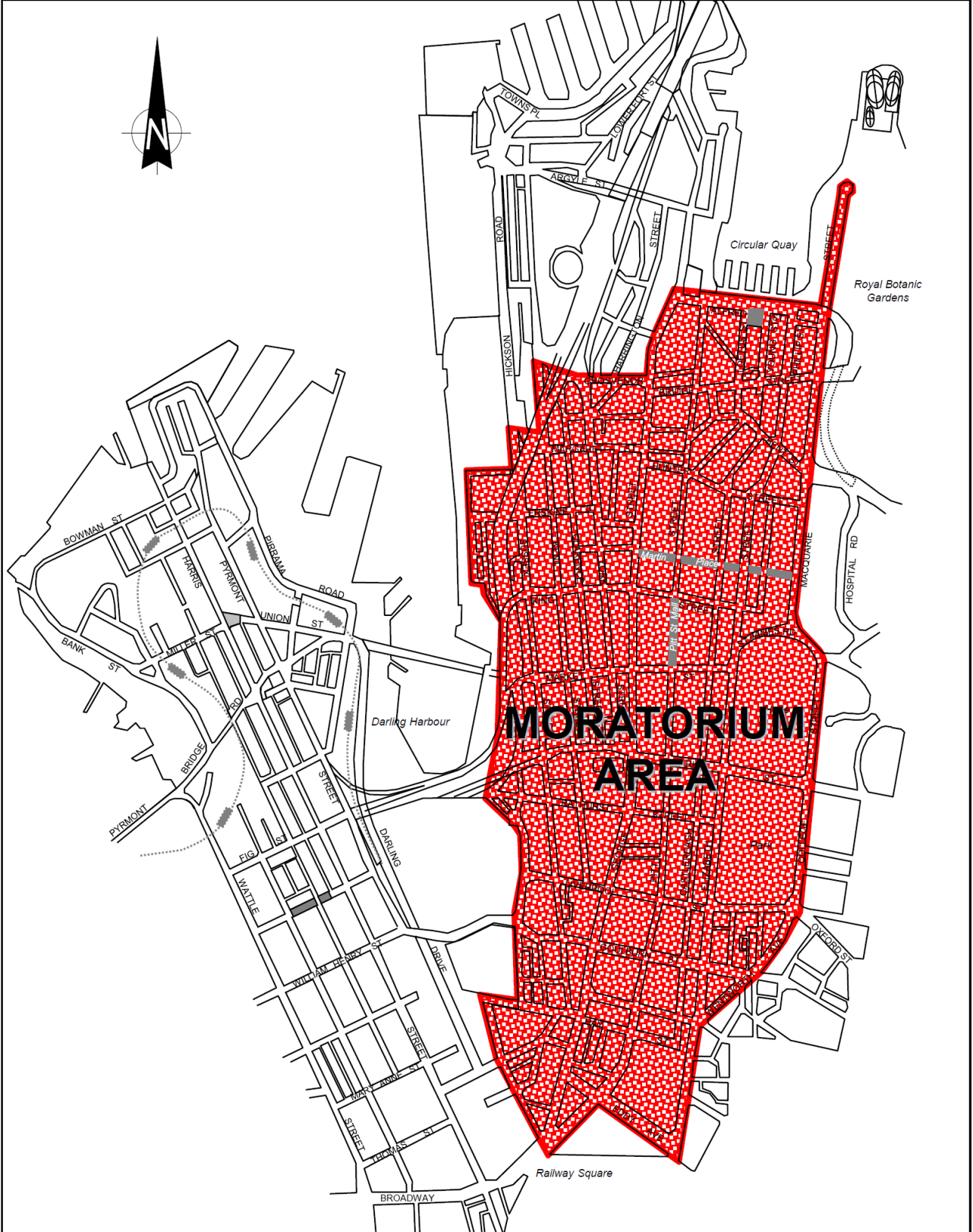
All costs associated with the proposed road closure will be borne by the Applicant.

**ATTACHMENTS**

Temporary Road Closures – City of Sydney CBD Moratorium

Col Warne, Traffic Project Manager

# MORATORIUM AREA





**ITEM 9****OTHER BUSINESS****COMMUNICATION STRATEGY FOR EARLY WORKS**

TfNSW have prepared a communication strategy for the 'CBD and South East Light Rail' project.

The strategy includes use of permanent Variable Message Signs (VMS), portable VMS, letterbox drops, advertising, signage, Website information, contact numbers, door knocking etc.

Advice to public on the upcoming works could be as follows:-

*Transport for NSW and Managing Contractor, Laing O'Rourke, will begin light rail early works at several intersections along George Street this month.*

*Trenches will be dug and vacuum excavated across each intersection to investigate whether underground services need to be protected or relocated to make way for light rail.*

*Work will be done on Sundays, over 24-hours (5am Sunday – 5am Monday) at:*

- *Bathurst and Liverpool Street intersections  
When: 26 October, 2 and 9 November  
Road closure: George Street, between Park and Goulburn Streets*
- *Goulburn Street intersection  
When: 9 November  
Road closure: George Street, between Bathurst and Hay Streets*
- *Essex, Bridge and Hunter Street intersections  
When: 16 and 30 November  
Road closure: George Street, between King and Alfred Streets*
- *King Street and Hunter Street intersections  
When: 7 and 14 December  
Road closure: George Street, between Market and Bridge Streets*

*Further work may be required at the Essex, Hunter and Bridge Street intersections over a two week period after Christmas (not including 31 December 2014 – 1 January 2015).*

*To stay up-to-date, view the [current works](#) page of the TfNSW website, or contact the TfNSW 24-hour Construction hotline on **1800 775 465**.*

Can TfNSW provide details on communication for the upcoming early works?

**TMC TACKFORCE WORK AREA FOR ROAD CLOSURE APPROVAL**

The City's Local Pedestrian Cycling and Traffic Calming Committee endorse temporary road closures over the Local Government Area which is well outside the central Sydney area.

Advice is provided to the TMC on these temporary road closures to prevent conflicts.

In many cases, the closures are in local streets and laneways which have no impact on the arterial road network.

Recently, Council endorsed some dates for temporary road closures on minor roads have been rejected by the TMC and Applicant requested to provide alternative dates.

The City is looking to resolve this issue to assist contactors with their necessary works.



ITEM 10

**SCHEDULE C**  
**Temporary Road Closure Conditions**

The Applicant and their representatives:

1. Must carry out letterbox drops to affected tenants, occupants and building managements at least one week prior to the commencement of the road closure, and to resolve, to the satisfaction of the City, any issues that may arise and all representations made by affected tenants and occupants.
2. Must provide a telephone number of the supervisor responsible for the proposed work to the City's Construction Regulations Unit, and include these contact details in the notification letters to affected tenants, occupants and building managements.
3. Must obtain written agreement from all affected car park operators for the proposed closures, and indemnify the City of Sydney and the Local Pedestrian, Cycling and Traffic Calming Committee against all claims of revenue loss as a result of the road closure.
4. Roads must be closed in accordance with AS1742.3 and the approved Traffic Management Plan, unless otherwise directed by Police or authorised City officers.
5. Before the road closure is implemented the applicant **MUST** obtain a permit from the City's Construction Regulations Unit (Telephone: 9265 9333).
6. Must contact the Police for deployment of User-Pays police if required for the road closure.
7. Must not occupy the carriageway or footway of the road until the road closure has been implemented.
8. Must at all times provide a 4-metre wide emergency lane along the closed road.
9. Must provide and maintain appropriate and adequate traffic measures (including detour signs and flagmen) for the safe movement of traffic and pedestrians.
10. Must, to the satisfaction of the Emergency Services, at all times provide access to adjoining premises in the road being closed. All services (fire hydrants etc) must be kept free of any obstructions.
11. Must advise emergency services (namely Police, Fire Brigade and St John Ambulance) of the road closure.
12. Must remove all barriers and signs associated with the road closure at the times nominated to reopen the road to traffic.
13. Must indemnify the City against all claims for damage or injury that may result from the activity or occupation of part of the road or footpath during the activity. The applicant must provide documentary evidence of public risk insurance cover indemnifying Council for a minimum of \$20,000,000.
14. Must reimburse the City for the cost of repair to any damage caused to the road or footpath as a result of their activities.
15. Must comply with any reasonable directive of the City Rangers, Police or Roads and Maritime Services.
16. Must at all times carryout the crane installation and lifting operations in a safe manner.
17. Must comply with the City's Code of Practice for Construction Hours and Noise within the City Centre.
18. Must place an advertisement in a Sydney metropolitan newspaper at least 7 days before the road closure.
19. Must meet all costs associated with the closure and shall pay all fees in accordance with the Council's current Fees and Charges.

20. Must notify the Transport for NSW Transport Management Centre.
21. Must ensure a suitable Occupational Health & Safety Plan is in place for all personnel working at the site.
22. Any variation on the approved date and conditions of approval must be submitted to the City's Traffic Operations Manager for resolution.
23. Must where practical make alternate parking arrangements for affected residents during the event.
24. Must have a Risk Management Plan for the road closure.
25. Note that in the event of a traffic incident or emergency, the Police will take control of all traffic and pedestrian arrangements.
26. If the closure is on a bus route, the applicant must notify the State Transit Authority before each road closure and pay any associated costs for rerouting services and/or moving bus stops during each closure.
27. Must advise car share operators of the approved closure 7 days before the road is closed if a car share parking bay is located in the street.
28. Must not block a driveway or access to any premises unless a written approval from the owner/occupants is first obtained.
29. The City reserves the right to revoke this road closure approval at any time without any compensation to the applicant.





# LOCAL PEDESTRIAN, CYCLING AND TRAFFIC CALMING COMMITTEE WORKING GROUP

Meeting No 2  
Friday 17 October 2014

TRIM 2014/483437

*minutes*

*city of villages*

## TABLE OF CONTENTS

ITEM		PAGE NO
1.	<b>APOLOGIES</b> .....	3
2.	<b>CONFIRMATION OF MINUTES FOR MEETING ON FRIDAY 3 OCTOBER 2014</b> .....	4
3.	<b>TEMPORARY ROAD CLOSURES – ROADWORKS - GEORGE STREET AT ESSEX STREET GROSVENOR STREET AND BRIDGE STREET - MARGARET STREET AND HUNTER STREET SYDNEY</b> .....	5
4.	<b>TEMPORARY ROAD CLOSURES – ROADWORKS - GEORGE STREET AT MARGARET STREET HUNTER STREET AND KING STREET SYDNEY</b> .....	7
5.	<b>TEMPORARY ROAD CLOSURES – ROADWORKS - GEORGE STREET AT BATHURST STREET AND LIVERPOOL STREET SYDNEY</b> .....	9
6.	<b>TEMPORARY ROAD CLOSURES – ROADWORKS - GEORGE STREET AT GOULBURN STREET SYDNEY</b> .....	11
7.	<b>TEMPORARY ROAD CLOSURES – ROADWORKS – EDDY AVENUE PITT STREET AND RAWSON PLACE SYDNEY</b> .....	13
8.	<b>TEMPORARY ROAD CLOSURES – CITY OF SYDNEY CBD ON- STREET CONSTRUCTION MORATORIUM</b> .....	14
9.	<b>OTHER BUSINESS - COMMUNICATION STRATEGY FOR EARLY WORKS - TMC TACKFORCE WORK AREA FOR ROAD CLOSURE APPROVAL</b> .....	15
10.	<b>SCHEDULE C – TEMPORARY ROAD CLOSURE CONDITIONS</b> .....	17

## **PRESENT**

Col Warne (A/Chairperson)  
Mark Hannan  
Matthew Degen  
Paul Carrett

Steve Brown  
Giovanny Ramirez  
Brian Mander  
Roy Bishop  
Terry O'Connor  
Zack Michalski  
Stephen Read  
Alan Finlay

City of Sydney  
City of Sydney  
City of Sydney  
Police State Planning Unit, Major Events  
& Incidents Group  
RMS  
CBD Taskforce/TfNSW  
CBD Taskforce/TfNSW  
Local Member for Sydney Rep  
TfNSW  
Laing O'Rourke Contractor  
Bitzios Consulting  
Bitzios Consulting

**ITEM 1 APOLOGIES**

James Mihos  
Garry Hitchcock  
Keith Williamson  
Alex Greenwich  
Stephen Sherwin  
Shane Schneider  
Paul McNeill  
Navin Prasad  
Steven Issa  
Brigid Kelly  
Barry Keogh  
Brett Maynard

Sydney City LAC Police  
Sydney City LAC Police  
Sydney City LAC Police  
Local Member for Sydney  
RMS  
RMS  
RMS  
RMS  
CBD Taskforce/TfNSW  
Office of the Lord Mayor  
City of Sydney  
GTA Consulting

**DECISION**

Apologies noted.

**ITEM 2 CONFIRMATION OF MINUTES FOR MEETING FRIDAY 3 OCTOBER 2014**

**DECISION**

The Committee endorsed the minutes.

**ITEM 3    TEMPORARY ROAD CLOSURES – ROADWORKS - GEORGE STREET  
AT ESSEX STREET GROSVENOR STREET AND BRIDGE STREET -  
MARGARET STREET AND HUNTER STREET SYDNEY (2014/446273-02)**

**RECOMMENDATION**

It is recommended that the Committee endorse the temporary road closures of

- George Street, between Grosvenor Street and Essex Street, Sydney, on each Sunday from 16 November to 30 November 2014 from Sunday 3am to Monday 5am;
- George Street, between Margaret Street and Hunter Street, Sydney, on each Sunday from 16 November to 30 November 2014 from Sunday 3am to Monday 5am; and
- George Street, at Grosvenor Street and Bridge Street, Sydney, on each Sunday from 16 November to 30 November 2014 from Sunday 3am to Monday 5am,

Subject to the following conditions:-

- (A) The Applicant must comply with the temporary road closure conditions as mentioned in Schedule C of this Agenda;
- (B) The Applicant must comply with any other conditions imposed by City's Construction Regulation Unit;
- (C) The Applicant must contact the Sydney City Local Area Command to discuss deployment of user pay police for the road closure;
- (D) The Applicant is to obtain a Road Occupancy Licence from the Transport Management Centre prior to commencement of works;
- (E) The Applicant must provide a telephone number of the supervisor responsible for the proposed George Street closures and include contact details in the notification letters to be distributed to affected stakeholders;
- (F) The Applicant must contact Sydney Buses and arrange and pay for the rerouting of bus services around the George Street closures, the temporary relocation of bus stops and any additional staff required; and
- (G) The Applicant must ensure all traffic control (barricades, signage, traffic controllers) presented at the Local Pedestrian Cycling and Traffic Calming Committee Working Group Meeting on each from 16 November to 30 November 2014 is implemented.

**DECISION**

The Committee carried the recommendation subject to

- (H) Lang O'Rourke Contractor and TfNSW to review City Rail's November programmed rail line shutdown works for the City Circle and Eastern Suburbs lines;
- (I) Lang O'Rourke Contractor to ensure all works comply with the City's Code of Practice for Construction Hours and Noise Practice for Construction Hours and Noise especially between 11pm and 7am; and
- (J) Prior to road reopening to traffic, Lang O'Rourke Contractor, TMC crews and Police to ensure no pedestrians are on roads.

## **BACKGROUND**

The Working Group at the 3 October 2014 meeting (Item 2) reviewed the temporary road closures for

- George Street, between Grosvenor Street and Essex Street, Sydney, on each Sunday from 16 November to 30 November 2014 from Sunday 3am to Monday 5am;
- George Street, between Margaret Street and Hunter Street, Sydney, on each Sunday from 16 November to 30 November 2014 from Sunday 3am to Monday 5am; and
- George Street, at Grosvenor Street and Bridge Street, Sydney, on each Sunday from 16 November to 30 November 2014 from Sunday 3am to Monday 5am.

**ITEM 4 TEMPORARY ROAD CLOSURES – ROADWORKS - GEORGE STREET AT MARGARET STREET HUNTER STREET AND KING STREET SYDNEY (2014/446423-02)**

**RECOMMENDATION**

It is recommended that the Committee endorse the temporary road closures of

- George Street at Margaret Street and Hunter Street, Sydney on Sunday 7 December from Sunday 3am to Monday 5am;
- George Street, at King Street, Sydney on Sunday from 7 December 2014 from Sunday 3am to Monday 5am;

Subject to the following conditions:-

- (A) The Applicant must comply with the temporary road closure conditions as mentioned in Schedule C of this Agenda;
- (B) The Applicant must comply with any other conditions imposed by City's Construction Regulation Unit;
- (C) The Applicant must contact the Sydney City Local Area Command to discuss deployment of user pay police for the road closure;
- (D) The Applicant is to obtain a Road Occupancy Licence from the Transport Management Centre prior to commencement of works;
- (E) The Applicant must provide a telephone number of the supervisor responsible for the proposed George Street closures and include contact details in the notification letters to be distributed to affected stakeholders;
- (F) The Applicant must contact Sydney Buses and arrange and pay for the rerouting of bus services around the George Street closures, the temporary relocation of bus stops and any additional staff required;
- (G) The Applicant must ensure all traffic control (barricades, signage, traffic controllers) presented at the Local Pedestrian Cycling and Traffic Calming Committee Working Group Meeting for each site is implemented on 7 December 2014;
- (H) The Applicant to consult with affect properties/groups such as The Ivy, Taxis, emergency services;
- (I) The Applicant to prepare detailed traffic control plans for each control point; and
- (J) The Applicant to review the proposed road closure in George Street, north of Park Street to move it north of Market Street.

**DECISION**

The Committee carried the recommendation subject to

- (K) Lang O'Rourke Contractor and TfNSW to review City Rail's December programmed rail line shutdown works for the City Circle and Eastern Suburbs lines;



- (L) Lang O'Rourke Contractor to ensure all works comply with the City's Code of Practice for Construction Hours and Noise of Practice for Construction Hours and Noise especially between 11pm and 7am;
- (M) Prior to road reopening to traffic, Lang O'Rourke Contractor, TMC crews and Police to ensure no pedestrians are on roads;
- (N) Additional road closures date for George Street at Margaret Street, Hunter Street and George Street, King Street on Sunday 14 December 2014 from Sunday 3am to Monday 5am be included;
- (O) 14 December 2014 is within the Moratorium period and is only permitted due to works being of State significance for new public transport in Sydney;
- (P) Lang O'Rourke Contractor to provide additional traffic and pedestrian control for 14 December works; and
- (Q) Lang O'Rourke Contractor and TfNSW to coordinate with the Santa Fun Run event organiser to ensure construction activities on 7 December 2014 do not impact on their event.

## **BACKGROUND**

The Working Group at the 3 October 2014 meeting (Item 3) reviewed the temporary road closures for

- George Street at Margaret Street and Hunter Street, Sydney for each Sunday from 7 to 14 December from Sunday 3am to Monday 5am;
- George Street, at King Street, Sydney for each Sunday from 7 to 14 December from Sunday 3am to Monday 5am.

**ITEM 5    TEMPORARY ROAD CLOSURES – ROADWORKS - GEORGE STREET  
AT BATHURST STREET AND LIVERPOOL STREET SYDNEY  
(2014/446579-02)**

**RECOMMENDATION**

It is recommended that the Committee endorse the temporary road closures of

- George Street at Park Street, Sydney, on each Sunday from 26 October to 2 November 2014 from Sunday 3am to Monday 5am;
- Bathurst Street at Kent Street, Sydney, from Sunday 26 October to 2 November 2014 3am to 9am and from Sunday 10pm to Monday 5am;
- George Street, at Goulburn Street, Sydney, on each Sunday from 26 October to 2 November 2014 from Sunday 3am to Monday 5am; and
- Liverpool Street at Castlereagh St, Sydney, on each Sunday from 26 October to 2 November 2014 from Sunday 3am to Monday 5am;

Subject to the following conditions:-

- (A) The Applicant must comply with the temporary road closure conditions as mentioned in Schedule C of this Agenda;
- (B) The Applicant must comply with any other conditions imposed by City's Construction Regulation Unit;
- (C) The Applicant must contact the Sydney City Local Area Command to discuss deployment of user pay police for the road closure;
- (D) The Applicant is to obtain a Road Occupancy Licence from the Transport Management Centre prior to commencement of works;
- (E) The Applicant must provide a telephone number of the supervisor responsible for the proposed George Street closures and include contact details in the notification letters to be distributed to affected stakeholders;
- (F) The Applicant must contact Sydney Buses and arrange and pay for the rerouting of bus services around the George Street closures, the temporary relocation of bus stops and any additional staff required;
- (G) The Applicant must ensure all traffic control (barricades, signage, traffic controllers) presented at the Local Pedestrian Cycling and Traffic Calming Committee Working Group Meeting on each from 26 October to 9 November 2014 is implemented;
- (H) The Applicant to consult with affect properties/groups, St Andrew's Church;
- (I) The Applicant must maintain emergency access next to the work site;
- (J) The Applicant to prepare detailed traffic control plans for each control point; and
- (K) The RMS to determine authorisation of changes to regulatory signage.

## **DECISION**

The Committee carried the recommendation subject to

- (L) Lang O'Rourke Contractor and TfNSW to review City Rail's October and November programmed rail line shutdown works for the City Circle and Eastern Suburbs lines;
- (M) Lang O'Rourke Contractor to ensure all works comply with the City's Code of Practice for Construction Hours and Noise especially between 11pm and 7am; and
- (N) Prior to road reopening to traffic, Lang O'Rourke Contractor, TMC crews and Police to ensure no pedestrians are on roads.

## **BACKGROUND**

The Working Group at the 3 October 2014 meeting (Item 4) reviewed the temporary road closures for

- George Street at Park Street, Sydney, on each Sunday from 26 October to 2 November 2014 from Sunday 3am to Monday 5am;
- Bathurst Street at Kent Street, Sydney, from Sunday 26 October to 2 November 2014 3am to 9am and from Sunday 10pm to Monday 5am;
- George Street, at Goulburn Street, Sydney, on each Sunday from 26 October to 2 November 2014 from Sunday 3am to Monday 5am; and
- Liverpool Street at Castlereagh St, Sydney, on each Sunday from 26 October to 2 November 2014 from Sunday 3am to Monday 5am.

**ITEM 6    TEMPORARY ROAD CLOSURES – ROADWORKS - GEORGE STREET  
AT GOULBURN STREET SYDNEY (2014/446617-02)**

**RECOMMENDATION**

It is recommended that the Committee endorse the temporary road closures of

- George Street at Bathurst Street, Sydney, on Sunday from 9 November 2014 from Sunday 3am to Monday 5am;
- George Street at Hay Street, Sydney, on Sunday from 9 November 2014 from Sun 5am to 9am and from Sun 10pm to Monday 5am;
- Goulburn Street between Sussex Street and Pitt Street, Sydney, from 9 November 2014 from Sunday 5am to Sun 9am and from Sun 10pm to Monday 5am;

Subject to the following conditions:-

- (A) The Applicant must comply with the temporary road closure conditions as mentioned in Schedule C of this Agenda;
- (B) The Applicant must comply with any other conditions imposed by City's Construction Regulation Unit;
- (C) The Applicant must contact the Sydney City Local Area Command to discuss deployment of user pay police for the road closure;
- (D) The Applicant is to obtain a Road Occupancy Licence from the Transport Management Centre prior to commencement of works;
- (E) The Applicant must provide a telephone number of the supervisor responsible for the proposed George Street closures and include contact details in the notification letters to be distributed to affected stakeholders;
- (F) The Applicant must contact Sydney Buses and arrange and pay for the rerouting of bus services around the George Street closures, the temporary relocation of bus stops and any additional staff required;
- (G) The Applicant must ensure all traffic control (barricades, signage, traffic controllers) presented at the Local Pedestrian Cycling and Traffic Calming Committee Working Group Meeting for each site is implemented on 9 November 2014;
- (H) The Applicant to consult with affect groups such as Taxis and properties affect by the closure;
- (I) The Applicant must maintain emergency access next to the work site;
- (J) The Applicant to prepare detailed traffic control plans for each control point; and
- (K) The RMS to determine authorisation of changes to regulatory signage.

## **DECISION**

The Committee carried the recommendation subject to

- (L) Lang O'Rourke Contractor and TfNSW to review City Rail's November programmed rail line shutdown works for the City Circle and Eastern Suburbs lines;
- (M) Lang O'Rourke Contractor to ensure all works comply with the City's Code of Practice for Construction Hours and Noise especially between 11pm and 7am;
- (N) Prior to road reopening to traffic, Lang O'Rourke Contractor, TMC crews and Police to ensure no pedestrians are on roads; and
- (O) The Applicant indicated a need for an additional closure on 21 December 2014 as a contingency for outstanding works. As this date falls within the City of Sydney's CBD On-street Construction Moratorium, and being the last weekend before Christmas is likely to impact the travel plans of many Christmas shoppers, the City strongly recommends that the Applicant seek an alternate date as a contingency.

## **BACKGROUND**

The Working Group at the 3 October 2014 meeting (Item 5) reviewed the temporary road closures for

- George Street at Bathurst Street, Sydney, on Sunday from 9 November 2014 from Sunday 3am to Monday 5am;
- George Street at Hay Street, Sydney, on Sunday from 9 November 2014 from Sun 5am to 9am and from Sun 10pm to Monday 5am;
- Goulburn Street between Sussex Street and Pitt Street, Sydney, from 9 November 2014 from Sunday 5am to Sun 9am and from Sun 10pm to Monday 5am.

**ITEM 7    TEMPORARY ROAD CLOSURES – ROADWORKS – EDDY AVENUE PITT STREET AND RAWSON PLACE SYDNEY (2014/462218)**

**RECOMMENDATION**

It is recommended that the Committee review TfNSW proposed work options at Eddy Avenue, Pitt Street and Rawson Place, Sydney and provide comments at the meeting.

General conditions for contractor to undertake road works are as follows:-

- (A) The Applicant must comply with the temporary road closure conditions as mentioned in Schedule C of this Agenda;
- (B) The Applicant must comply with any other conditions imposed by City's Construction Regulation Unit;
- (C) The Applicant must contact the Sydney City Local Area Command to discuss deployment of user pay police for the road closure;
- (D) The Applicant is to obtain a Road Occupancy Licence from the Transport Management Centre prior to commencement of works;
- (E) The Applicant must provide a telephone number of the supervisor responsible for the proposed George Street closures and include contact details in the notification letters to be distributed to affected stakeholders; and
- (F) The Applicant must ensure all traffic control (barricades, signage, traffic controllers) presented at the Local Pedestrian Cycling and Traffic Calming Committee Working Group Meeting on each staged road closure.

**DECISION**

The Committee carried the recommendation subject to

- (G) Lang O'Rourke Contractor and TfNSW to review City Rail's November programmed rail line shutdown works for the City Circle and Eastern Suburbs lines;
- (H) Lang O'Rourke Contractor to ensure all works comply with the City's Code of Practice for Construction Hours and Noise especially between 11pm and 7am;
- (I) Prior to road reopening to traffic, Lang O'Rourke Contractor, TMC crews and Police to ensure no pedestrians are on roads; and
- (J) Lang O'Rourke Contractor and TfNSW to develop Traffic Management and Traffic Control Plans for review by the LPCTCC Working Group members.

**BACKGROUND**

Transport for NSW's (TfNSW) '*CBD and South East Light Rail*' project requires a check of underground services along the rail corridor especial through the CBD as part of early works for the light rail.

Lang O'Rourke Contractor (LOC) has been engaged by TfNSW to undertake the service checks on the Pitt Street, Eddy Avenue and Rawson Place intersection.

## **ITEM 8    TEMPORARY ROAD CLOSURES – CITY OF SYDNEY CBD ON-STREET CONSTRUCTION MORATORIUM (2014/465191)**

### **RECOMMENDATION**

It is recommended that the Committee consider each temporary road closure site within the moratorium area to determine what can or cannot be constructed.

### **DECISION**

The Committee carried the recommendation for the works scheduled on 14 December 2014 at the intersection of George and Goulburn Streets subject to Lang O'Rourke Contractor providing additional traffic and pedestrian control and noted:

- The City strongly recommends that the Applicant seek an alternate contingency date for works at the intersection of George and Goulburn Streets scheduled for 21 December 2014 considering it is the last weekend before Christmas and is likely to impact the travel plans of many Christmas shoppers; and
- The City requests that the Applicant consults with the Overseas Passenger Terminal about the proposed temporary closure of George, Grosvenor and Bridge Streets from 27 to 30 December 2014 and from 2 January to 11 January 2015 to ensure business continuity during the peak cruise season.
- The Applicant must consult with Mirvac at 200 George Street, Sydney about the proposed temporary road closure of George Street, at Grosvenor and Bridge Streets and at Essex Street from 27 to 30 December 2014 and from 2 January to 11 January 2015 to determine construction vehicle access to their Works Zones.
- The Applicant must advise the City of the access arrangements once finalised.

### **BACKGROUND**

The City of Sydney has a moratorium for on-street construction activities in and around the CBD every December.

Light Rail early works to determine the location of services under the roadway has a number of sites required to be worked on during the moratorium.

**ITEM 9 OTHER BUSINESS – COMMUNICATION STRATEGY FOR EARLY WORKS - TMC TACKFORCE WORK AREA FOR ROAD CLOSURE APPROVAL**

**COMMUNICATION STRATEGY FOR EARLY WORKS**

TfNSW have prepared a communication strategy for the 'CBD and South East Light Rail' project.

The strategy includes use of permanent Variable Message Signs (VMS), portable VMS, letterbox drops, advertising, signage, Website information, contact numbers, door knocking etc.

Advice to public on the upcoming works could be as follows:-

*Transport for NSW and Managing Contractor, Laing O'Rourke, will begin light rail early works at several intersections along George Street this month.*

*Trenches will be dug and vacuum excavated across each intersection to investigate whether underground services need to be protected or relocated to make way for light rail.*

*Work will be done on Sundays, over 24-hours (5am Sunday – 5am Monday) at:*

- *Bathurst and Liverpool Street intersections  
When: 26 October, 2 and 9 November  
Road closure: George Street, between Park and Goulburn Streets*
- *Goulburn Street intersection  
When: 9 November  
Road closure: George Street, between Bathurst and Hay Streets*
- *Essex, Bridge and Hunter Street intersections  
When: 16 and 30 November  
Road closure: George Street, between King and Alfred Streets*
- *King Street and Hunter Street intersections  
When: 7 and 14 December  
Road closure: George Street, between Market and Bridge Streets*

*Further work may be required at the Essex, Hunter and Bridge Street intersections over a two week period after Christmas (not including 31 December 2014 – 1 January 2015).*

*To stay up-to-date, view the [current works](#) page of the TfNSW website, or contact the TfNSW 24-hour Construction hotline on **1800 775 465**.*

Can TfNSW provide details on communication for the upcoming early works?

**DECISION**

The Committee endorsed the content for information and consultation subject to

- (A) TfNSW to provide Communication Strategy information to Committee members.



## **TMC TACKFORCE WORK AREA FOR ROAD CLOSURE APPROVAL**

The City's Local Pedestrian Cycling and Traffic Calming Committee endorse temporary road closures over the Local Government Area which is well outside the central Sydney area.

Advice is provided to the TMC on these temporary road closures to prevent conflicts.

In many cases, the closures are in local streets and laneways which have no impact on the arterial road network.

Recently, Council endorsed some dates for temporary road closures on minor roads have been rejected by the TMC and Applicant requested for alternative dates.

The City is looking to resolve this issue to assist contactors with their necessary works.

## **DECISION**

The Committee was advised that

- (A) The CBD Taskforce/TfNSW procedures will be reviewed to ensure temporary road closures on minor roads are not delayed or stop;
- (B) TMC to expedite inquiries from construction companies on available dated for work; and
- (C) TMC also agreed to circulate to all Committee members a map outlining the street boundaries of the CBD Taskforce.

## ITEM 10 SCHEDULE C

### SCHEDULE C Temporary Road Closure Conditions

The Applicant and their representatives:

1. Must carry out letterbox drops to affected tenants, occupants and building managements at least one week prior to the commencement of the road closure, and to resolve, to the satisfaction of the City, any issues that may arise and all representations made by affected tenants and occupants.
2. Must provide a telephone number of the supervisor responsible for the proposed work to the City's Construction Regulations Unit, and include these contact details in the notification letters to affected tenants, occupants and building managements.
3. Must obtain written agreement from all affected car park operators for the proposed closures, and indemnify the City of Sydney and the Local Pedestrian, Cycling and Traffic Calming Committee against all claims of revenue loss as a result of the road closure.
4. Roads must be closed in accordance with AS1742.3 and the approved Traffic Management Plan, unless otherwise directed by Police or authorised City officers.
5. Before the road closure is implemented the Applicant **MUST** obtain a permit from the City's Construction Regulations Unit (Telephone: 9265 9333).
6. Must contact the Police for deployment of User-Pays police if required for the road closure.
7. Must not occupy the carriageway or footway of the road until the road closure has been implemented.
8. Must at all times provide a 4-metre wide emergency lane along the closed road.
9. Must provide and maintain appropriate and adequate traffic measures (including detour signs and flagmen) for the safe movement of traffic and pedestrians.
10. Must, to the satisfaction of the Emergency Services, at all times provide access to adjoining premises in the road being closed. All services (fire hydrants etc) must be kept free of any obstructions.
11. Must advise emergency services (namely Police, Fire Brigade and St John Ambulance) of the road closure.
12. Must remove all barriers and signs associated with the road closure at the times nominated to reopen the road to traffic.
13. Must indemnify the City against all claims for damage or injury that may result from the activity or occupation of part of the road or footpath during the activity. The Applicant must provide documentary evidence of public risk insurance cover indemnifying Council for a minimum of \$20,000,000.
14. Must reimburse the City for the cost of repair to any damage caused to the road or footpath as a result of their activities.
15. Must comply with any reasonable directive of the City Rangers, Police or Roads and Maritime Services.
16. Must at all times carryout the crane installation and lifting operations in a safe manner.

17. Must comply with the City's Code of Practice for Construction Hours and Noise within the City Centre.
18. Must place an advertisement in a Sydney metropolitan newspaper at least 7 days before the road closure.
19. Must meet all costs associated with the closure and shall pay all fees in accordance with the Council's current Fees and Charges.
20. Must notify the Transport for NSW Transport Management Centre.
21. Must ensure a suitable Work Health & Safety Plan is in place for all personnel working at the site.
22. Any variation on the approved date and conditions of approval must be submitted to the City's Traffic Operations Manager for resolution.
23. Must where practical make alternate parking arrangements for affected residents during the event.
24. Must have a Risk Management Plan for the road closure.
25. Note that in the event of a traffic incident or emergency, the Police will take control of all traffic and pedestrian arrangements.
26. If the closure is on a bus route, the applicant must notify the State Transit Authority before each road closure and pay any associated costs for rerouting services and/or moving bus stops during each closure.
27. Must advise car share operators of the approved closure 7 days before the road is closed if a car share parking bay is located in the street.
28. Must not block a driveway or access to any premises unless a written approval from the owner/occupants is first obtained.
29. The City reserves the right to revoke this road closure approval at any time without any compensation to the Applicant.

